

“

Andel is an environmental company at the cutting edge of water, oil and gas resource control and management within the built and natural environments.



Floodline[®] leak detection solution
for the built environment.



Making water sustainable for
a cleaner and safer environment.

“

A true **hybrid solution** that can report to a single integrated control panel.

Andel's **Floodline®** system is a sustainable, award-winning water, oil and gas leak detection solution for critical locations within the built environment.

Resilient, sustainable, cost-effective, easy to install and maintain. Floodline® is a flexible, future-proof, zonal and distance measuring system, allowing additional zones, sensors and upgrades to be added easily and cost effectively. Hybrid, multifunction control panels provide complete BMS connectivity via Modbus and onward communication capabilities include Modbus, Ethernet, email and SMS. Andel offers a 10-year warranty on all Floodline® leak detection and water sustainability products.

Floodline® leak detection systems, installed within critical areas of a building, provide a sustainable and cost-effective early warning, allowing for a speedy response to protect natural resources, prevent damage, reduce disruption and limit loss.

Control panels monitor the extensive range of **Floodline®** leak detection and environmental monitoring sensors in multiple zones in any building. Water flow monitoring and motion sensor systems provide a sustainable water conservation solution, protecting natural resources, saving on water bills and can earn BREEAM credits.

Detect, locate, isolate – **Floodline®** systems can automatically isolate water, gas and oil supplies to any number of zones if an alarm is triggered. Each zone is electrically isolated and in the event of an alarm or maintenance work, unaffected zones continue to provide full and uninterrupted monitoring.

Floodline® digital gas systems offer a range of interchangeable, off-the-shelf sensors and alarms. Bespoke, made-to-order sensors are also available for specific gases and specialist environments such as medical or fire suppressant.

Floodline® allows the sensitivity of each individual zone to be set to the requirements for that zone, significantly reducing the risk of false alarms and avoiding unnecessary downtime.

Floodline® is a true hybrid monitoring system that can also connect to third-party sensors and report to a single, multifunction control panel, located above floor level and easily accessible. Systems can cover all possible leak detection requirements, from single-zone to multi-zone and distance measuring, with the capability to protect the largest of buildings, old and new.

Award-winning **Floodline® HLD**, the control panel that takes leak detection to a whole new level.

The next generation, hybrid, multi-detector monitoring system.

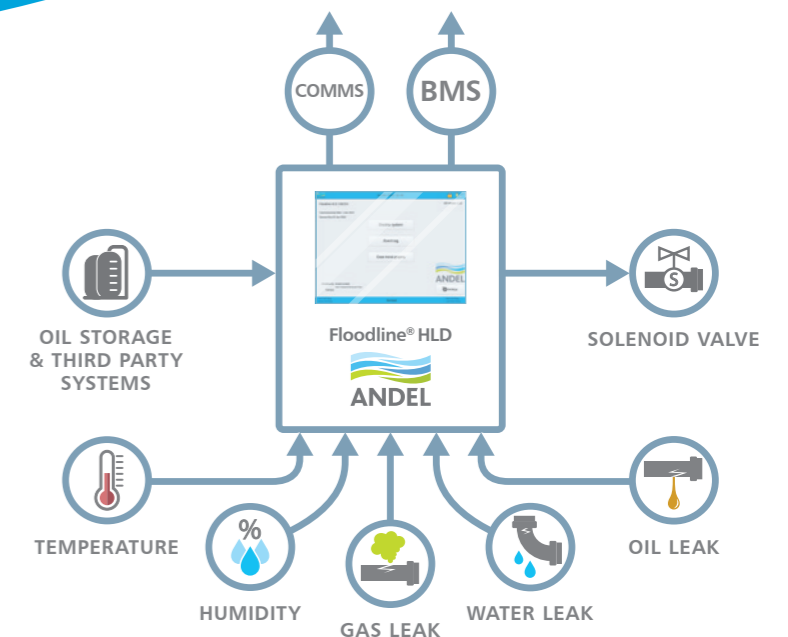
The **Floodline® HLD** control panel is a unique, hybrid, state-of-the-art leak detection and environmental monitoring system. The only system that is able to simultaneously accept input alarms and provide detailed data from water, gas and oil leak sensors as well as temperature and humidity sensors.

Floodline® HLD can monitor the extensive range of **Floodline®** leak detection cables and sensors from a single, wall-mounted control panel and is packed with the latest technology and enhanced installer and end-user functionality.

Floodline® HLD key benefits:

- Monitors from 4 to 128 zones using resistance-based sensors
- Plus from 8 to 224 zones using Modbus-enabled sensors
- Can simultaneously monitor and provide detailed data for water, oil, gas, temperature and humidity sensors
- Can control solenoid and low-power motorised valves to automatically isolate water, oil and gas supply as required, in any single or group of zones, in the event of an alarm
- The sensitivity of any zone can be adjusted to the individual requirements for that working environment – all via the touchscreen setup
- Full hybrid, simultaneous monitoring of traditional zonal and distance measuring leak detection systems
- Digital control panel with large, easy-to-use 8-inch LED touchscreen
- Embedded map of all monitored areas pinpoints the location of any alarm activation
- Modbus or volt-free contact connection to BMS
- Onward communication capabilities include Modbus, Ethernet, email and SMS
- 10-year warranty

Floodline® HLD can monitor from 4 to 128 zones using resistance-based sensors and from 8 to 224 zones using Modbus-enabled sensors. A Floodline® zone can be anything from a single point to multiple sensors for all types of leak detection and monitoring as well as distance measuring liquid leak detection up to 1500 metres.



Floodline® leak detection systems can protect any type of building.

Offices

- Water Leak Sensors (zonal/distance measuring)
- Oil Leak Sensors (zonal/distance measuring)
- Digital Refrigerant Gas Leak Sensors (BREEAM Pol 01)
- Digital Carbon Monoxide Gas Leak Sensors
- Bespoke Digital Gas Leak Sensors – any commercially used gas
- Temperature & Humidity Monitoring Sensors
- PIR Motion Sensor Auto Water Flow Control (BREEAM Wat 03)
- Residential Unit Abnormal Usage Auto Water Supply Isolators
- Mains Water High-Usage Alarm (BREEAM Wat 02, Wat 03)

Data Rooms/Network & Comms Rooms/M&E Equipment Rooms/Satellite Equipment Rooms

Plant/HVAC/Generator Rooms

Tea & Coffee Points/Vending Areas/Showers/WC Areas

Basement Car Park

Mains Water Supply

Schools/Universities

- Water Leak Sensors (zonal/distance measuring)
- Oil Leak Sensors (zonal/distance measuring)
- Digital Refrigerant Gas Leak Sensors (BREEAM Pol 01)
- Digital Carbon Monoxide Gas Leak Sensors
- Bespoke Digital Gas Leak Sensors – any commercially used gas
- Temperature & Humidity Monitoring Sensors
- PIR Motion Sensor Auto Water Flow Control (BREEAM Wat 03)
- Residential Unit Abnormal Usage Auto Water Supply Isolators
- Mains Water High-Usage Alarm (BREEAM Wat 02, Wat 03)

ICT Suites/Laboratories/Network & Comms Rooms/Server Rooms

Classrooms/Lecture Theatres/Sports Halls

Showers/WC Areas/Kitchens

Plant/HVAC

Mains Water Supply

Hotels

- Water Leak Sensors (zonal/distance measuring)
- Oil Leak Sensors (zonal/distance measuring)
- Digital Refrigerant Gas Leak Sensors (BREEAM Pol 01)
- Digital Carbon Monoxide Gas Leak Sensors
- Bespoke Digital Gas Leak Sensors – any commercially used gas
- Temperature & Humidity Monitoring Sensors
- PIR Motion Sensor Auto Water Flow Control (BREEAM Wat 03)
- Residential Unit Abnormal Usage Auto Water Supply Isolators
- Mains Water High-Usage Alarm (BREEAM Wat 02, Wat 03)

Showers/WC Areas/Kitchens

Bedrooms

M&E Equipment Rooms

Basement Car Park

Mains Water Supply

Factories/Industrial

- Water Leak Sensors (zonal/distance measuring)
- Oil Leak Sensors (zonal/distance measuring)
- Digital Refrigerant Gas Leak Sensors (BREEAM Pol 01)
- Digital Carbon Monoxide Gas Leak Sensors
- Bespoke Digital Gas Leak Sensors – any commercially used gas
- Temperature & Humidity Monitoring Sensors
- PIR Motion Sensor Auto Water Flow Control (BREEAM Wat 03)
- Residential Unit Abnormal Usage Auto Water Supply Isolators
- Mains Water High-Usage Alarm (BREEAM Wat 02, Wat 03)

Plant/HVAC/Generator Rooms/Manufacturing

Tea & Coffee Points/Vending Areas/Showers/WC Areas

Mains Water Supply

Hospitals

- Water Leak Sensors (zonal/distance measuring)
- Oil Leak Sensors (zonal/distance measuring)
- Digital Refrigerant Gas Leak Sensors (BREEAM Pol 01)
- Digital Carbon Monoxide Gas Leak Sensors
- Bespoke Digital Gas Leak Sensors – any commercially used gas
- Temperature & Humidity Monitoring Sensors
- PIR Motion Sensor Auto Water Flow Control (BREEAM Wat 03)
- Residential Unit Abnormal Usage Auto Water Supply Isolators
- Mains Water High-Usage Alarm (BREEAM Wat 02, Wat 03)

Wards/Theatres/Waiting Rooms/Lifts

Showers/WC Areas/Kitchens

Server Rooms/Network & Comms Rooms/M&E Equipment Rooms

Plant/HVAC/Generator Rooms

Mains Water Supply

Residential Apartments

- Water Leak Sensors (zonal/distance measuring)
- Oil Leak Sensors (zonal/distance measuring)
- Digital Refrigerant Gas Leak Sensors (BREEAM Pol 01)
- Digital Carbon Monoxide Gas Leak Sensors
- Bespoke Digital Gas Leak Sensors – any commercially used gas
- Temperature & Humidity Monitoring Sensors
- PIR Motion Sensor Auto Water Flow Control (BREEAM Wat 03)
- Residential Unit Abnormal Usage Auto Water Supply Isolators
- Mains Water High-Usage Alarm (BREEAM Wat 02, Wat 03)

Showers/WC Areas/Kitchens

Bedrooms

Basement Car Park

Plant/HVAC/Generator Rooms

M&E Equipment Rooms

Mains Water Supply

Student Accommodation

- Water Leak Sensors (zonal/distance measuring)
- Oil Leak Sensors (zonal/distance measuring)
- Digital Refrigerant Gas Leak Sensors (BREEAM Pol 01)
- Digital Carbon Monoxide Gas Leak Sensors
- Bespoke Digital Gas Leak Sensors – any commercially used gas
- Temperature & Humidity Monitoring Sensors
- PIR Motion Sensor Auto Water Flow Control (BREEAM Wat 03)
- Residential Unit Abnormal Usage Auto Water Supply Isolators
- Mains Water High-Usage Alarm (BREEAM Wat 02, Wat 03)

Showers/WC Areas/Kitchens

Bedrooms

M&E Equipment Rooms

Mains Water Supply

Museums/Galleries/Historic Buildings

- Water Leak Sensors (zonal/distance measuring)
- Oil Leak Sensors (zonal/distance measuring)
- Digital Refrigerant Gas Leak Sensors (BREEAM Pol 01)
- Digital Carbon Monoxide Gas Leak Sensors
- Bespoke Digital Gas Leak Sensors – any commercially used gas
- Temperature & Humidity Monitoring Sensors
- PIR Motion Sensor Auto Water Flow Control (BREEAM Wat 03)
- Residential Unit Abnormal Usage Auto Water Supply Isolators
- Mains Water High-Usage Alarm (BREEAM Wat 02, Wat 03)

Exhibition Spaces/Archives/Storage Rooms/Computer Rooms/Network & Comms Rooms/M&E Equipment Rooms

WC Areas/Kitchens

Mains Water Supply

Data Centres

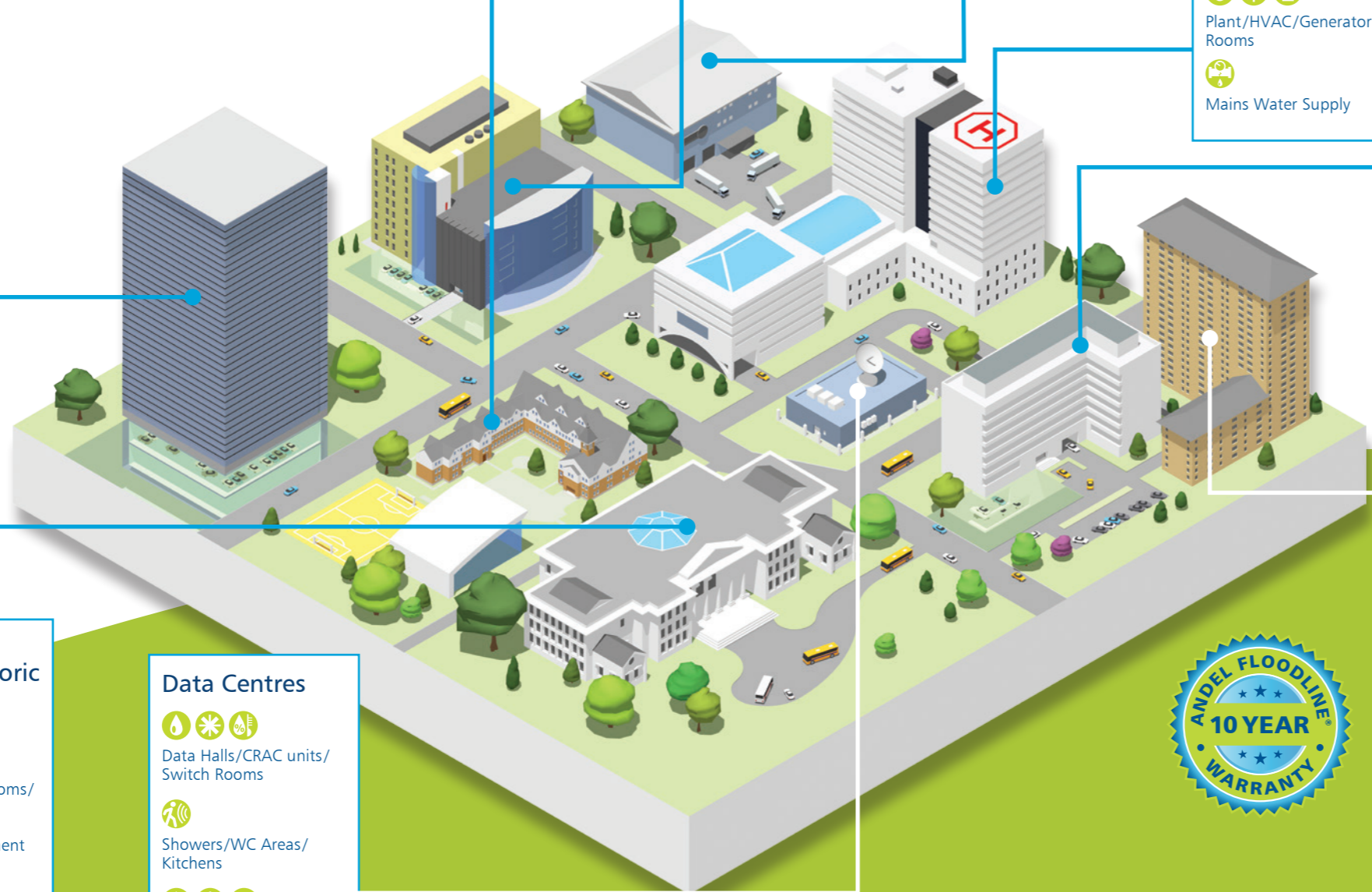
- Water Leak Sensors (zonal/distance measuring)
- Oil Leak Sensors (zonal/distance measuring)
- Digital Refrigerant Gas Leak Sensors (BREEAM Pol 01)
- Digital Carbon Monoxide Gas Leak Sensors
- Bespoke Digital Gas Leak Sensors – any commercially used gas
- Temperature & Humidity Monitoring Sensors
- PIR Motion Sensor Auto Water Flow Control (BREEAM Wat 03)
- Residential Unit Abnormal Usage Auto Water Supply Isolators
- Mains Water High-Usage Alarm (BREEAM Wat 02, Wat 03)

Data Halls/CRAC units/Switch Rooms

Showers/WC Areas/Kitchens

HVAC/Generator Rooms

Mains Water Supply



Symbol Key

- Water Leak Sensors (zonal/distance measuring)
- Oil Leak Sensors (zonal/distance measuring)
- Digital Refrigerant Gas Leak Sensors (BREEAM Pol 01)
- Digital Carbon Monoxide Gas Leak Sensors
- Bespoke Digital Gas Leak Sensors – any commercially used gas
- Temperature & Humidity Monitoring Sensors
- PIR Motion Sensor Auto Water Flow Control (BREEAM Wat 03)
- Residential Unit Abnormal Usage Auto Water Supply Isolators
- Mains Water High-Usage Alarm (BREEAM Wat 02, Wat 03)



10-year warranty

Customers can now enjoy the additional comfort of a 10-year warranty on all Floodline® and water sustainability products, at no extra cost. Terms apply.

All our products are rigorously tested to ensure they always meet the highest standards. We are confident in the design, quality and durability of every product we manufacture.

Products covered:

- Control and alarm panels
- Water and oil leak detection sensors and cables
- Digital gas leak detection systems
- Temperature and humidity monitoring sensors
- BREEAM products
- Water sustainability products



Making water sustainable for a cleaner and safer environment.

Users of Andel's Floodline® leak detection and water sustainability equipment include many of the world's leading blue chip organisations.



LEAK DETECTION



WATER SUSTAINABILITY



OIL STORAGE MAINTENANCE & COMPLIANCE



DRAINAGE, WASTEWATER & INTERCEPTOR MAINTENANCE



FLOOD DEFENCE

Andel Ltd,
Unit 1 Dodworth Business Park South,
Upper Cliffe Road, Dodworth,
Barnsley S75 3SP

For more information call
+44 (0)1484 845 000
help@andel.co.uk
www.andel.co.uk

